

EVE-NG Documentation

Table of Contents

Linux external SFTP server setup.....	2
Install Ubuntu Server with OpenSSH service (recommended)	2
Setup SFTP client user and home directory.....	2
Directory permissions for sftp user	3
Test access to your SFTP server	3
Windows host SFTP server.....	3
SFTP Server installation.....	3
SFTP Server IP setup.....	4
Create the SFTP user for backup.....	4
Test access to your Win SFTP server.....	5

© EVE-NG LTD

The information contained in this document is the property of EVE-NG Limited

The contents of the document must not be reproduced or disclosed wholly or in part or used for purposes other than that for which it is supplied without the prior written permission of EVE-NG Limited.

Linux external SFTP server setup

Install Ubuntu Server with OpenSSH service

The Ubuntu server 20.04 or newer version will fit for SFTP server needs. The static IP for this server is strongly recommended. Access from this SFTP server to the EVE and back is mandatory. **Don't forget that you must be root user for following setup below.**

Step 1. Setup static IP for your SFTP server, **syntax below for netplan is mandatory**

```
root@sftp-test:~# nano /etc/netplan/00-installer-config.yaml
```

Setup your network for static IP:

```
# This is the network config written by 'subiquity'
network:
  ethernets:
    ens34:
      addresses: ["192.168.70.32/24"]
      gateway4: 192.168.70.254
      nameservers:
        addresses: ["8.8.8.8", "1.1.1.1"]
  version: 2
```

- ❖ To save netplan settings use: CTRL +o [letter o]; Enter; CTRL +x [for exit]
- ❖ Run test the new network settings, enter

```
root@sftp-test:~# netplan try
```

- ❖ Apply new network settings and reboot

```
root@sftp-test:~# netplan apply
```

```
root@sftp-test:~# reboot
```

Setup SFTP client user and home directory

Step 2. Edit and paste the following lines at the end or bottom of the file:

```
root@sftp-test:~# nano /etc/ssh/sshd_config
```

```
Match group sftp
ChrootDirectory /home/
X11Forwarding no
AllowTcpForwarding no
ForceCommand internal-sftp
```

- ❖ To save netplan settings use: CTRL +o [letter o]; Enter; CTRL +x [for exit]

```
root@sftp-test:~# systemctl restart ssh
```

```
### Create sftp group for sshd users
root@sftp-test:~# addgroup sftp
Adding group `sftp' (GID 1001) ...
Done.
```

```

### Create sftpuser and add it in sftp group defined in sshd config.
root@sftp-test:~# useradd -m sftpuser -g sftp

### Set sftp user password
root@sftp-test:~# passwd sftpuser

### Or for existing user
root@sftp-test:~# usermod -a -G groupName username

```

Directory permissions for sftp user

Step 3. Assign read-write permissions for sftp user directories

```

root@sftp-test:~# chmod 755 /home
root@sftp-test:~# chown sftpuser:sftp /home/sftpuser
root@sftp-test:~# chmod 755 /home/sftpuser

```

Test access to your SFTP server

Step 4. Use any sftp application like WinSCP or FileZilla to test SFTP access to your SFTP server.

Note: Your SFTP server must be reachable from and to the EVE server.

/sftpuser/			
Name	Size	Changed	Rights
└─┬─		02/03/2024 12:30:38	<u>rwXr-xr-x</u>
└─┬─ .cache		02/03/2024 12:30:53	rwX-----
└─┬─ .ssh		02/03/2024 12:30:47	rwX-----
└─┬─ .bash_history	1 KB	02/03/2024 12:33:58	rw-----
└─┬─ .bash_logout	1 KB	25/02/2020 12:03:22	rw-r--r--
└─┬─ .bashrc	4 KB	25/02/2020 12:03:22	rw-r--r--
└─┬─ .profile	1 KB	25/02/2020 12:03:22	rw-r--r--
└─┬─ .sudo_as_admin_successful	0 KB	02/03/2024 12:31:01	rw-r--r--

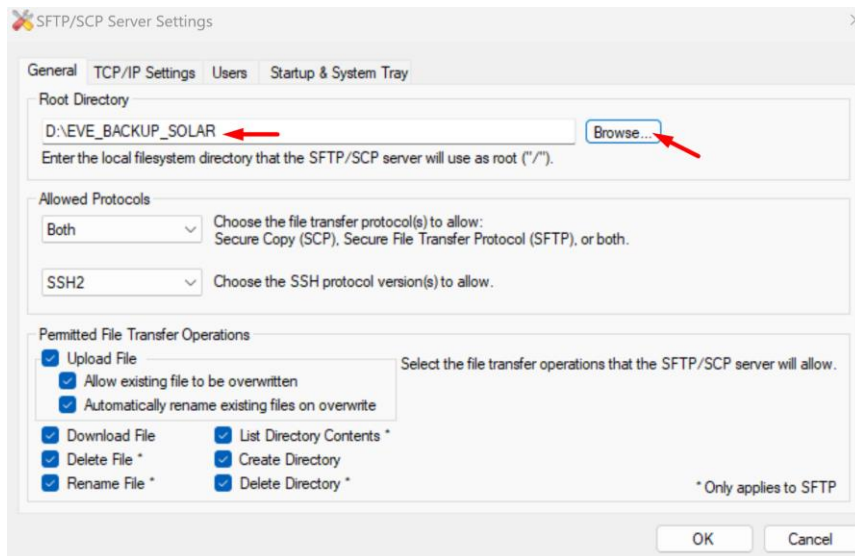
Windows host SFTP server

SFTP Server installation

Step 1. Download Solarwinds SFTP server tool.

<https://www.solarwinds.com/free-tools/free-sftp-server>

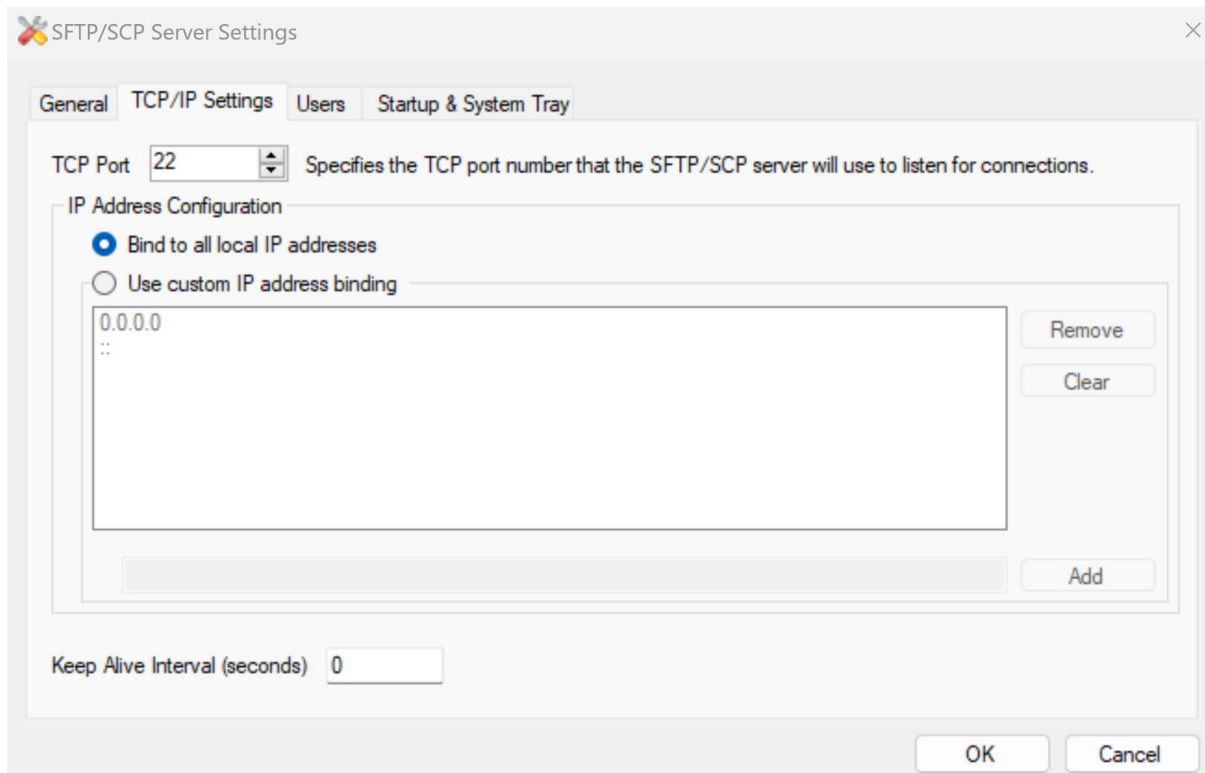
Run the Solarwinds Putty SFTP server application and select backup directory. Make sure you have appropriate HDD space to do the EVE backup.



If you have issues detecting the new disk, just perform a reboot and it should then display correctly. In

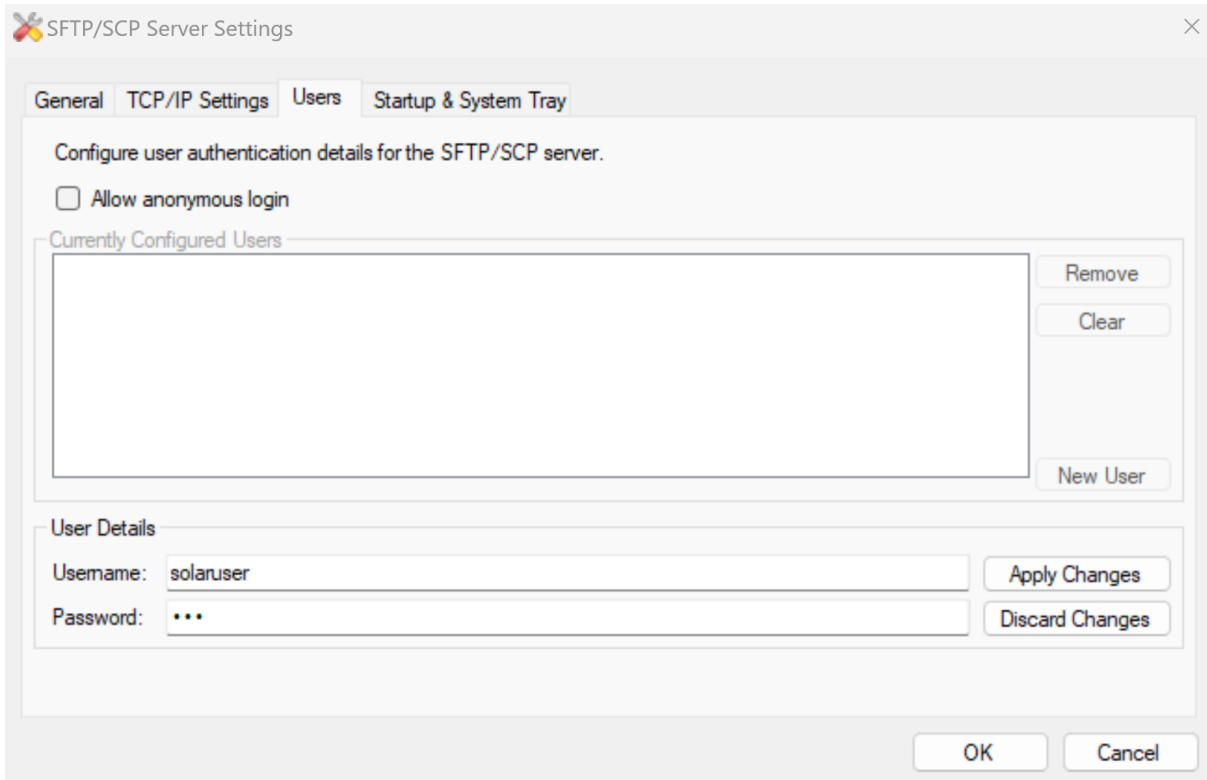
SFTP Server IP setup

Step 2. Check TCP/IP Settings, bind to your local IP will be your Windows machine IP

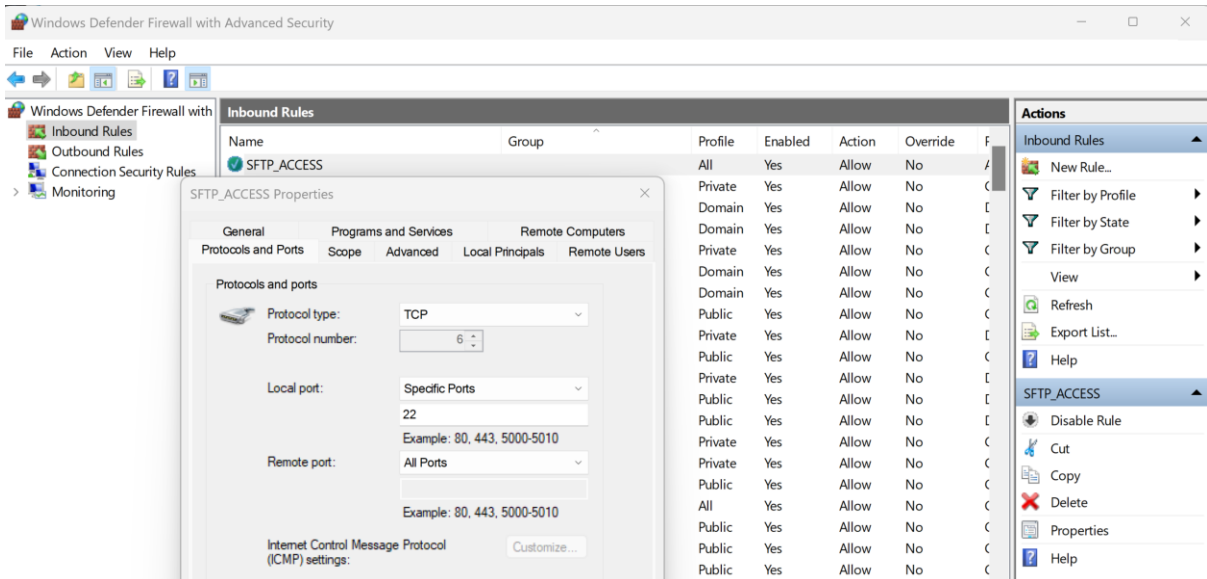


Create the SFTP user for backup

Step 3. Select tab Users and create SFTP user account



Step 4. Modify your Windows Defender Firewall settings to allow pass TCP 22.



Test access to your Win SFTP server

Step 4. Use any sftp application like WinSCP or FileZilla to test SFTP access to your SFTP server.
Note: Your SFTP server must be reachable from and to the EVE server.

Name	Size	Changed	Rights	Owner
/		02/03/2024 13:51:22	<u>rw-rw-rw-</u>	0